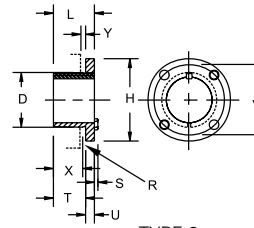
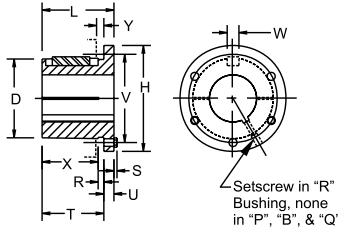


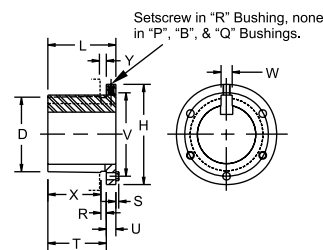
TYPE 1 "G" & "H" BUSHINGS



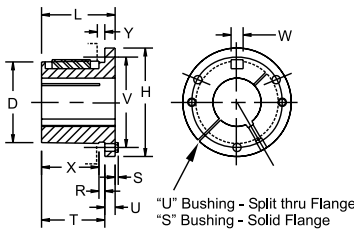
TYPE 2



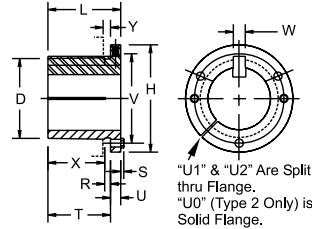
TYPE 1 "P", "B", "Q" & "R" BUSHING



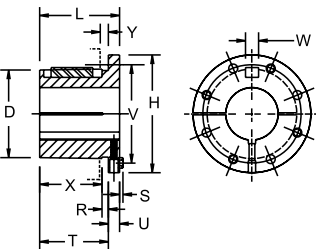
TYPE 2



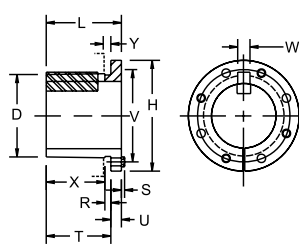
TYPE 1 "S" & "U" BUSHINGS



TYPE 2



TYPE 1 "W" & "Y" BUSHINGS



TYPE 2

TABLE No. 1

### BUSHING SPECIFICATIONS

PART No	DIMENSIONS													BORE RANGE		CAP SCREWS		AV. WT. LBS.	WRENCH TORQUE In-Lbs.
	L	U	T	D		H	V	W	X	Y	R	S	TYPE 1	TYPE 2	No.	SIZE			
				LARGE END	SMALL END														
G	1	1/4	3/4	1.172	1.134	2	1 9/16	-	10/16	3/16	1/8	3/16	3/8 - 15/16	1	2	1/4-20 x 5/8	0.5	95	
H	1 1/4	1/4	1	1.625	1.571	2 1/2	2	-	14/16	3/16	1/8	3/16	3/8 - 1 1/8	1 7/16 - 1 1/2	2	1/4-20 x 5/8	0.8	95	
P1	1 15/16	3/8	1 9/16	1.938	1.856	3	2 7/16	3/8	1 5/16	5/16	1/4	13/64	1/2 - 1 7/16	1 1/2 - 1 3/4	3	5/16-18 x 1	1.3	192	
P2	2 15/16	3/8	2 9/16	1.938	1.793	3	2 7/16	3/8	2 5/16	5/16	1/4	13/64	3/4 - 1 7/16	1 1/2 - 1 3/4	3	5/16-18 x 1	1.5	192	
P3	4 7/16	3/8	4 1/16	1.938	1.699	3	2 7/16	3/8	3 13/16	5/16	1/4	13/64	1 1/8 - 1 3/8	1.625	3	5/16-18 x 1	1.5	192	
B	1 15/16	1/2	1 7/16	2.625	2.557	3 11/16	3 2/16	1/2	1 1/16	3/8	5/16	13/64	1/2 - 1 15/16	2 - 2 7/16	3	5/16-18 x 1 1/4	1.8	192	
Q1	2 1/2	1/2	2	2.875	2.769	4 1/8	3 3/8	1/2	1 11/16	3/8	1/4	15/64	3/4 - 2 1/16	2 1/8 - 2 11/16	3	3/8-16 x 1 1/4	3.5	348	
Q2	3 1/2	1/2	3	2.875	2.707	4 1/8	3 3/8	1/2	2 11/16	3/8	1/4	15/64	1 - 2 1/16	2 1/8 - 2 5/8	3	3/8-16 x 1 1/4	4.5	348	
Q3	5	1/2	4 8/16	2.875	2.613	4 1/8	3 3/8	1/2	4 3/16	3/8	1/4	15/64	1 3/8 - 2 1/16	2 1/8 - 2 1/2	3	3/8-16 x 1 1/4	5.5	348	
R1	2 7/8	5/8	2 1/4	4.000	3.877	5 3/8	4 5/8	3/4	1 15/16	5/16	1/4	15/64	1 1/8 - 2 13/16	2 7/8 - 3 3/4	3	3/8-16 x 1 3/4	7.5	348	
R2	4 7/8	5/8	4 1/4	4.000	3.752	5 3/8	4 5/8	3/4	3 15/16	5/16	1/4	15/64	1 - 2 1/16	2 1/8 - 2 5/8	3	3/8-16 x 1 3/4	11	348	
S1	4 3/8	3/4	3 5/8	4.623	4.420	6 3/8	5 3/8	3/4	3 1/4	7/16	3/8	5/16	1 11/16 - 3 3/16	3 1/4 - 4 1/4	3	1/2-13 x 2 1/4	13.5	840	
S2	6 3/4	3/4	6	4.623	4.272	6 3/8	5 3/8	3/4	5 5/8	7/16	3/8	5/16	1 7/8 - 3 3/16	3 1/4 - 4 3/16	3	1/2-13 x 2 1/4	19	840	
U0	4 15/16	3/4	4 3/16	5.997	5.768	8 3/8	7	1 1/4	3 11/16	9/16	1/2	3/8	2 3/8 - 4 1/4	4 3/8 - 5 1/2	3	5/8-11 x 2 3/4	27	1680	
U1	7 1/8	1 3/16	5 15/16	5.997	5.658	8 3/8	7	1 1/4	5 7/16	9/16	1/2	3/8	2 3/8 - 4 1/4	4 3/8 - 5 1/2	3	5/8-11 x 2 3/4	40	1680	
U2	10 1/8	1 3/16	8 15/16	5.997	5.471	8 3/8	7	1 1/4	8 7/16	9/16	1/2	3/8	2 7/16 - 4 1/4	4 3/8 - 5	3	5/8-11 x 2 3/4	50	1680	
W1	8 1/4	1 7/16	6 13/16	8.496	8.104	12 1/2	10	1 1/4	6 1/4	9/16	1/2	1/2	3 3/8 - 6 3/16	6 1/4 - 7 7/16	4	3/4-10 x 3	104	3000	
W2	11 1/4	1 7/16	9 13/16	8.496	7.916	12 1/2	10	1 1/4	9 1/4	9/16	1/2	1/2	3 3/8 - 6 3/16	6 1/4 - 7 7/16	4	3/4-10 x 3	133	3000	
Y0	11 1/8	2	9 1/8	12.000	11.469	16 1/2	14 1/2	2	8 1/2	11/16	5/8	5/8	6 - 7 15/16	8-10	4	1-8 x 5	270	7200	

TABLE No. 2 - FLANGE SET SCREW

	THREAD	TIGHTENING TORQUE (in-lb)
R	5/16-18	165
S.U	3/8-16	290
W.Y	1/2-13	620

R1 - 1 1/8, R1 3/16, R2 1 3/8, S1 1 11/16, S1 1 3/4 and S2 1 7/8" to 2 1/8" Bushings are steel. U0 and U1 2 3/8" to 3 3/16" and U2 2 7/16" to 3 3/16" are cast iron. "W" and "Y" Bushings are cast iron. All other Bushings on this page are either sintered steel, malleable iron or ductile iron.  
 Contact Factory for clarification. Y Bushings are made-to-order.  
 Note: Taper on all Browning Split Bushings is 3/4" per foot on diameter.

### COMPLETE ROUND SHAFT COVERAGE PLUS MILLIMETER AND SPLINE BORES

TABLE No. 1 STOCK INCH BORE BUSHINGS

STOCK BORES	KEYSEAT	G	H	P1	P2	P3	B	Q1	Q2	Q3	R1	R2	S1
3/8"	None	X	X	-	-	-	-	-	-	-	-	-	-
7/16	None	X	X	-	-	-	-	-	-	-	-	-	-
1/2	1/8 X 1/16	X	X	X	-	-	X	-	-	-	-	-	-
9/16	1/8 X 1/16	X	X	X	-	-	X	-	-	-	-	-	-
19/32	3/16 X 3/32	-	X	-	-	-	-	-	-	-	-	-	-
5/8	3/16 X 3/32	X	X	X	-	-	X	-	-	-	-	-	-
21/32	3/16 X 3/32	-	X	X	-	-	-	-	-	-	-	-	-
11/16	3/16 X 3/32	X	X	X	-	-	X	-	-	-	-	-	-
3/4	3/16 X 3/32	X	X	X	X	-	X	-	-	-	-	-	-
25/32	3/16 X 3/32	-	X	X	-	-	-	-	-	-	-	-	-
13/16	3/16 X 3/32	X	X	X	X	-	X	X	-	-	-	-	-
7/8	3/16 X 3/32	X	X	X	X	-	X	X	-	-	-	-	-
15/16	1/4 X 1/8	X*	X	X	X	-	X	X	-	-	-	-	-
31/32	1/4 X 1/8	-	X	X	-	-	-	-	-	-	-	-	-
1	1/4 X 1/8	X*	X	X	X	-	X	X	X	-	-	-	-
1 1/16	1/4 X 1/8	-	X	X	X	-	X	X	X	-	-	-	-
1 1/8	1/4 X 1/8	-	X	X	X	X	X	X	X	-	X	-	-
1 3/16	1/4 X 1/8	-	X	X	X	-	X	X	X	-	X	-	-
1 1/4	1/4 X 1/8	-	X*	X	X	-	X	X	X	-	X	-	-
1 5/16	5/16 X 5/32	-	X*	X	X	-	X	X	X	-	X	-	-
1 3/8 ▲	5/16 X 5/32	-	X*	X	X	X*	X	X	X	X	X	X	-
1 3/8 ▲	3/8 X 3/16	-	X*	X	X	-	X	X	X	-	X	-	-
1 7/16	3/8 X 3/16	-	X*	X	X*	-	X	X	X	X	X	X	-
1 1/2	3/8 X 3/16	-	X*	X	X	-	X	X	X	X	X	X	-
1 9/16	3/8 X 3/16	-	-	X	X	-	X	X	X	X	X	X	-
1 5/8	3/8 X 3/16	-	-	X	X	X	X	X	X	X	X	X	-
1 11/16	3/8 X 3/16	-	-	X	X	-	X	X	X	X	X	X	X
1 3/4	3/8 X 3/16	-	-	X	X	-	X	X	X	X	X	X	X

TABLE No. 1 (CONT.)

STOCK BORES	KEYSEAT	W1	W2
5 5/8	1 1/2 X 3/4	X	X
5 3/4	1 1/2 X 3/4	X	X
5 7/8	1 1/2 X 3/4	X	X
5 15/16	1 1/2 X 3/4	X	X
6	1 1/2 X 3/4	X	X
6 1/8	1 1/2 X 3/4	X	X
6 3/16	1 1/2 X 3/4	X	X
6 1/4	1 1/2 X 3/4	X	X
6 3/8	1 1/2 X 3/4	X	X
6 7/16	1 1/2 X 3/4	X	X
6 1/2	1 1/2 X 3/4	X	X
6 5/8	1 3/4 X 3/4	X	X
6 3/4	1 3/4 X 3/4	X	X
6 7/8	1 3/4 X 3/4	X	X
6 15/16	1 3/4 X 3/4	X	X
7	1 3/4 X 3/4	X	X
7 1/8	1 3/4 X 3/4	X	X
7 3/16	1 3/4 X 3/4	X	X
7 1/4	1 3/4 X 3/4	X	X
7 3/8	1 3/4 X 3/4	X	X
7 7/16	1 3/4 X 3/4	X	X

		B	Q1	Q2	Q3	R1	R2	S1	S2	U0	U1	U2
1 13/16	1/2 X 1/4	X	X	X	X	X	X	-	-	-	-	-
1 7/8	1/2 X 1/4	X	X	X	X	X	X	X	X	-	-	-
1 15/16	1/2 X 1/4	X	X	X	X	X	X	X	X	-	-	-
2	1/2 X 1/4	X	X	X	X	X	X	X	X	-	-	-
2 1/16	1/2 X 1/4	X	X	X	X	X	X	-	-	-	-	-
2 1/8	1/2 X 1/4	X	X	X	X	X	X	X	X	-	-	-
2 3/16	1/2 X 1/4	X	X	X	X	X	X	X	X	-	-	-
2 1/4	1/2 X 1/4	X	X	X	X	X	X	X	X	-	-	-
2 5/16	5/8 X 5/16	X	X	X	X	X	X	X	X	-	-	-
2 3/8	5/8 X 5/16	X	X	X	X	X	X	X	X	X	-	-
2 7/16	5/8 X 5/16	X	X	X	X	X	X	X	X	X	X	-
2 1/2	5/8 X 5/16	-	X	X	X	X	X	X	X	X	X	-
2 9/16	5/8 X 5/16	-	X	X	-	X	X	X	X	X	X	-
2 5/8	5/8 X 5/16	-	X	X	-	X	X	X	X	X	X	-
2 11/16	5/8 X 5/16	-	X	-	-	X	X	X	X	X	X	-
2 3/4	5/8 X 5/16	-	-	-	-	X	X	X	X	X	X	-
2 13/16	3/4 X 3/8	-	-	-	-	X	X	-	-	-	-	-
2 7/8	3/4 X 3/8	-	-	-	-	X	X	X	X	X	X	-
2 15/16	3/4 X 3/8	-	-	-	-	X	X	X	X	X	X	-
3	3/4 X 3/8	-	-	-	-	X	X	X	X	X	X	-
3 1/8	3/4 X 3/8	-	-	-	-	X	X	X	X	X	X	-
3 3/16	3/4 X 3/8	-	-	-	-	X	X	X	X	X	X	-
3 1/4	3/4 X 3/8	-	-	-	-	X	X	X	X	X	X	-

TABLE No. 2 STOCK MILLIMETER BORE BUSHINGS

STOCK BORES	KEYSEAT (Millimeters)	G	H	P1	B	Q1	R1	R2
10 mm.	None	X	X	-	-	-	-	-
11 mm.	None	X	X	-	-	-	-	-
12 mm.	None	X	X	-	-	-	-	-
14 mm.	5 x 2.5	X	X	X	-	-	-	-
15 mm..	5 x 2.5	-	-	X	X	-	-	-
16 mm.	5 x 2.5	X	X	X	X	-	-	-
18 mm.	6 x 3	X	X	X	X	X	-	-
19 mm.	6 x 3	X	X	X	X	X	-	-
20 mm.	6 x 3	X	X	X	X	X	-	-
22 mm.	6 x 3	X	X	X	X	X	-	-
24 mm.	8 x 3.5	X	X	X	X	X	-	-
25 mm.	8 x 3.5	X	X	X	X	X	-	-
28 mm.	8 x 3.5	-	X	X	X	X	X	-
30 mm.	8 x 3.5	-	X	X	X	X	X	-
32 mm.	10 x 4	-	X	X	X	X	X	-
35 mm.	10 x 4	-	X	X	X	X	X	X
36 mm.	10 x 4	-	X	X	X	X	X	X
38 mm.	10 x 4	-	X	X	X	X	X	X
39 mm.	12 x 4	-	-	X	X	-	X	X
40 mm.	12 x 4	-	-	X	X	X	X	X
42 mm.	12 x 4	-	-	X	X	X	X	X
45 mm.	14 x 4.5	-	-	-	X	X	X	X
48 mm.	14 x 4.5	-	-	-	X	X	X	X
50 mm.	14 x 4.5	-	-	-	X	X	X	X
55 mm.	16 x 5	-	-	-	X	X	X	X
60 mm.	18 x 5.5	-	-	-	X	X	X	X
65 mm.	18 x 5.5	-	-	-	-	X	X	X
70 mm.	20 x 6	-	-	-	-	-	X	X
75 mm.	20 x 6	-	-	-	-	-	X	X
80 mm.	22 x 7	-	-	-	-	-	X	X
85 mm.	22 x 7	-	-	-	-	-	X	X
90 mm.	25 x 7	-	-	-	-	-	X	X
95 mm.	25 x 7	-	-	-	-	-	X	-

TABLE No. 3 STOCK SPLINE BORE BUSHINGS

SPLINE	H	P1	Q1	Q2
.978 - 10 Inv.	X	X	-	-
1 1/8 - 6B	X	X	X	-
1 1/4 - 10B	-	X	-	-
1 3/8 - 6B	X	X	X	X
1 3/8 - 10B	-	X	X	-
1 3/8 - 21 Inv.	X	X	X	-

▲ 1 3/8 Bore Bushings with 5/16 x 5/32" Keyway will be shipped unless the 3/8 x 3/16 Keyway is specified on the order.

\* These sizes have a shallow keyseat. Special keys furnished to fit standard depth keyseats in shafts.

		R1	R2	S1	S2	U0	U1	U2	W1	W2
3 3/8	7/8 X 7/16	X	X	X	X	X	X	X	X	X
3 7/16	7/8 X 7/16	X	X	X	X	X	X	X	X	X
3 1/2	7/8 X 7/16	X	X	X	X	X	X	X	X	X
3 5/8	7/8 X 7/16	X	X	X	X	X	X	X	X	X
3 11/16	7/8 X 7/16	X	-	X	X	X	X	X	X	X
3 3/4	7/8 X 7/16	X	-	X	X	X	X	X	X	X
3 7/8	1 X 1/2	-	-	X	X	X	X	X	X	X
3 15/16	1 X 1/2	-	-	X	X	X	X	X	X	X
4	1 X 1/2	-	-	X	X	X	X	X	X	X
4 1/8	1 X 1/2	-	-	X	X	X	X	X	X	X
4 3/16	1 X 1/2	-	-	X	X	X	X	X	X	X
4 1/4	1 X 1/2	-	-	X	X	X	X	X	X	X
4 3/8	1 X 1/2	-	-	-	X	X	X	X	X	X
4 7/16	1 X 1/2	-	-	-	X	X	X	X	X	X
4 1/2	1 X 1/2	-	-	-	X	X	X	X	X	X
4 5/8	1 1/4 X 5/8	-	-	-	X	X	X	X	X	X
4 11/16	1 1/4 X 5/8	-	-	-	X	X	X	X	X	X
4 3/4	1 1/4 X 5/8	-	-	-	X	X	X	X	X	X
4 7/8	1 1/4 X 5/8	-	-	-	X	X	X	X	X	X
4 15/16	1 1/4 X 5/8	-	-	-	X	X	X	X	X	X
5	1 1/4 X 5/8	-	-	-	X	X	X	X	X	X
5 1/8"	1 1/4 X 5/8	X	X	X	X					
5 3/16	1 1/4 X 5/8	X	X	X	X					
5 1/4	1 1/4 X 5/8	X	X	X	X					
5 3/8	1 1/4 X 5/8	X	X	X	X					
5 7/16	1 1/4 X 5/8	X	X	X	X					
5 1/2	1 1/4 X 5/8	X	X	X	X					

